

**55452A OSMF-UX SOFTWARE
TP4 OPTION
SYSTEM ADMINISTRATOR'S GUIDE**

This guide provides information necessary to install the TP4 option on an OSMF workstation. The information in this manual applies to the TP4 option software having the version number listed below, unless accompanied by a "Manual Updating Changes" package indicating otherwise.

SOFTWARE VERSION NUMBER: 1.3

For assistance, contact:

Symmetricom, Inc.
2300 Orchard Parkway
San Jose, CA 95131-1017

U.S.A. Call Center:
888-367-7966 (from inside U.S.A. only – toll free)
408-428-7907

U.K. Call Center:
+44.7000.111666 (Technical Assistance)
+44.7000.111888 (Sales)
+44.1604.586740

Fax: 408-428-7998

E-mail: ctac@symmetricom.com

Internet: <http://www.symmetricom.com>

Warning symbols that may be used in this book:



Instruction manual symbol; the product will be marked with symbol when it is necessary for the user to refer to the instruction manual.



Indicates hazardous voltages.



Indicates earth (ground) terminal.



or



Indicates terminal is connected to chassis when such connection is not apparent.



Indicates Alternating current.



Indicates Direct current.

Contents

1 Introduction and General Information

1.1 In This Guide	1-2
1.2 Description of the TP4 Option	1-2
1.3 Materials Provided	1-3
1.4 Responsibilities of the System Administrator	1-3
1.5 System Requirements	1-3
1.5.1.1 OSMF Workstation Hardware and Software Requirements.....	1-3
1.5.1.2 Hardware Requirements for SSUs	1-3
1.6 Prerequisite Knowledge	1-4
1.7 Related Documentation.....	1-4

2 Installation

2.1 In this Chapter	2-2
2.2 Installing the TP4 Option	2-2
2.3 Starting OSMF	2-3

A OTS Configuration

A.1 OTS Configuration.....	A-2
----------------------------	-----

1.1 In This Guide

This *55452A OSMF Software TP4 Option System Administrator's Guide* provides information necessary to install, manage, and maintain the TP4 option. It makes the assumption you have HP-UX, OSI, and OSMF software experience.

1.1.1 Topics Included in This Guide

This guide includes the following topics:

- A description of the TP4 option.
- Minimum system resources required to run the TP4 option.
- Responsibilities of the system administrator.
- Installation of the TP4 option on the workstation.

1.1.2 Naming Conventions Used in this Guide

This guide uses several names to refer to the same objects. The usage of multiple terms for the same object helps define the relationship between objects in different situations. To establish naming conventions, the objects and their corresponding names are listed in the following table:

Object	Names Used for the Object
55452A open synchronization management framework software	OSMF software for HP-UX, OSMF software, OSMF
HP-UX Workstation	OSMF workstation, OSMF system, host system, element manager
OSI Transport Protocol Class 4	TP4

1.2 Description of the TP4 Option

The OSMF TP4 option enables the OSMF workstation to communicate over a network using OSI Transport Protocol, class 4. TP4, the most powerful OSI Transport Protocol, provides reliable, sequenced, flow-controlled, two-way transmission of packets with an alternate stop-and-wait data path (the expedited data service). TP4 is defined by ISO 8073.

1.3 Materials Provided

The 55452A OSMF Software TP4 Option includes the materials listed in the following table:

Description	Part Number	Qty
Software on DAT tape	55452-13307	1
<i>55452A OSMF Software TP4 Option System Administrator's Guide</i> (Documentation)	097-55452-12	1

1.4 Responsibilities of the System Administrator

The system administrator is responsible for maintenance of the OSMF system and the OSMF TP4 option software. This requires the system administrator to understand the workstation hardware and all of the software installed.

The main responsibility of the system administrator is installing the TP4 option software.

1.5 System Requirements

1.5.1 The following is required to run the TP4 option software.

1.5.1.1 OSMF Workstation Hardware and Software Requirements

The OSMF TP4 option runs on the same workstation on which the OSMF product runs. The hardware requirements for the TP4 option are the same as those for the OSMF product. Refer to the *55452A OSMF Software System Administrator's Guide* for information on the hardware requirements for the OSMF product.

In addition to the software requirements detailed in the section entitled "System Requirements" in the *55452A OSMF Software System Administrator's Guide*, the Agent requires that the OSI Transport Services product, HP OTS/9000, be installed on the OSMF workstation.

NOTE

The TP4 option requires that version 3.0 of the OSMF software be installed on the OSMF workstation.

1.5.1.2 Hardware Requirements for SSUs

To be managed by the OSMF software using the TP4 protocol, a 55400A Synchronization Supply Unit (SSU) must include the 55442A Option 003 Network Information Management (NIMC) card.

1.6 Prerequisite Knowledge

The procedures in this manual assume that the system administrator has HP-UX, OSI, and OSMF software experience. This knowledge is useful, and in some cases necessary when performing the tasks in this manual. Training classes are available on these subjects.

1.7 Related Documentation

Some procedures in this guide may refer you to procedures or other information that is contained in the *55452A OSMF Software System Administrator's Guide*.

2.1 In this Chapter

The procedures in this chapter explain how to do the following:

- Install the OSMF Software TP4 Option.
- Start the TP4 Option.
- Stop the TP4 Option.

The procedures in this chapter assume that the following is true:

- You have at least the minimum standard hardware required for an OSMF system (see the section titled “System Requirements” in the *55452A OSMF Software System Administrator’s Guide*).
- You have the HP OTS/9000 software installed on your workstation.
- You have sufficient knowledge or experience with HP-UX, OSI, the OSMF software, and the system hardware to be able to follow these installation instructions.

NOTE

OSMF software, version 3.0 is a prerequisite for version 1.3 of the TP4 option. Before attempting to install the TP4 option, ensure that the OSMF software, version 3.0 is installed on the workstation.

2.2 Installing the TP4 Option

To install the TP4 option, use the Software Distributor, as described in the following procedure.

- 1 Log in as **root**, and type the following command to source the OSMF environment (this command must be run from the Korn shell [ksh]):

```
. /opt/smartview/config/env/sv-ux.env
```

- 2 Type the following command to stop OpenView:

```
svstop
```

- 3 Insert the OSMF TP4 option installation tape into the local system tape drive.

NOTE

You can run “swinstall” directly as an alternative to running it from SAM. If you choose to do this, it is only necessary to perform steps 6 through 11.

- 4 Type the following command to start the System Administration Manager (SAM):

```
/usr/sbin/sam
```

- 5 Double click on **Software Management**.

- 6 Double click on **Install Software to Local Host**.

- 7 Click on **Source Depot Type**, then select **Local Tape**.
- 8 Click on **Source Depot Path**, select the path to the local tape drive, then click **OK**.

Typically, the path to the local tape drive will be /dev/rmt/0m.

- 9 In the Software Selection window, highlight **55452CC**, and click on **Actions>Install (analysis)**.

Install analysis begins automatically, and it normally completes with a status of "Ready." If a status other than "Ready" is indicated, click the **Logfile...** button in the "Install Analysis" dialog box for information about the problem.

- 10 After install analysis completes, click **OK**, and then click **Yes** in the confirmation window that appears.

After "Yes" is clicked, the execution phase of the install process will start. This phase should complete with no errors.

- 11 When the status shows "Completed" and "Percent Complete=100%," click **Done**.
- 12 Click **File>Exit** to exit Software Distributor.
- 13 Click **File>Exit SAM** to end the software installation process and exit SAM.

2.3 Starting OSMF

Refer to the main OSMF manual for instructions on starting the OSMF application.

A

— OTS Configuration

A.1 OTS Configuration

Before the OSMF TP4 option is installed, HP OTS/9000 should be properly configured on the OSMF workstation. This appendix includes the following topics:

- Configuration of OTS/9000.
- Connectivity check between the OSMF workstation and SSUs.
- Creation of an NSAP file on the workstation.

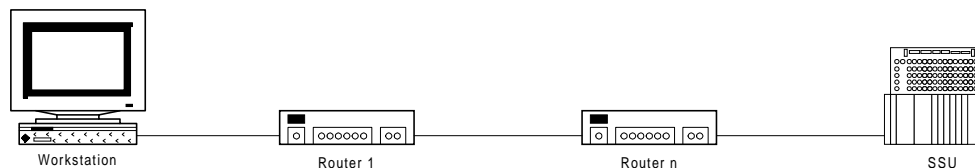
These topics need to be addressed in the order presented.

A.1.1 Configuring OTS

NOTE

This section provides only a summary of the configuration of OTS. Refer to the OTS configuration manual for specific details pertaining to OTS configuration.

This section contains a summary of the configuration of OSI Transport Services (OTS) for TP4. The summary covers the scenario where the OSMF workstation is connected to SSUs on the network over an OSI router, as in the following example diagram:



When the OSMF workstation will be connected to SSUs on the network via an OSI router, "Destination Systems" in the OTS Configuration must contain the following details pertaining to the router that is the next hop from the OSMF workstation ("Router 1" in the above diagram).

- The NSAP address of Router 1
- The MAC address of Router 1
- The outgoing sub-network name
- Whether Router 1 is a EndSystem(ES) or Intermediate System(IS). In this case, Router 1 is an Intermediate System.

NOTES

Destination Systems parameters are changed in OTS using the "osiadmin" tool and choosing OTS ⇒ Configure OTS ⇒ Destination Systems.

"Routes" in OTS configuraton must also be configured when the OSMF workstation will be connected to the SSUs via a router. "Routes" is also changed using the "osiadmin" tool.

A.1.2 Checking connectivity between the OSMF workstation and SSUs

Once OTS/9000 has been configured, connectivity between the OSMF workstation and an endsystem must be checked. The following procedure ensures that the OSMF workstation can communicate with at least one SSU in the network.

- 1 Type the following command to start the “osiadmin” tool:

```
/etc/osiadmin
```

- 2 Choose: **OTS** ⇒ **Test Connectivity** ⇒ **Transport Tests** ⇒ **Connect** to call up the *Transport Destination TSAP* dialog box.
- 3 In the *Transport Destination TSAP* dialog box, enter the following parameters:
 - **Transport Selector** - 7588
 - **Network Address** - the NSAP address of an SSU in the network that has been commissioned.
- 4 Click Done or Press F4 Key to execute the connect test.

The result should indicate that the test passed, indicating that the workstation can connect to the SSU.

A.1.3 Creating an NSAP File

Once the NSAP address of the OSMF workstation is modified, an NSAP file has to be created on the workstation by the system administrator. The NSAP file will be used by the OSMF software.

- Type the following command to create the NSAP file;

```
/opt/OV/bin/create_paddr
```

When the above command executes, an NSAP address file (local_p_addr) is generated in the directory “/etc/opt/OV/share/conf/.”

NOTE

Whenever the NSAP address of the OSMF workstation is changed, the above command must be executed to modify the NSAP file. If the command is not executed, the OSMF application will not function as expected.
